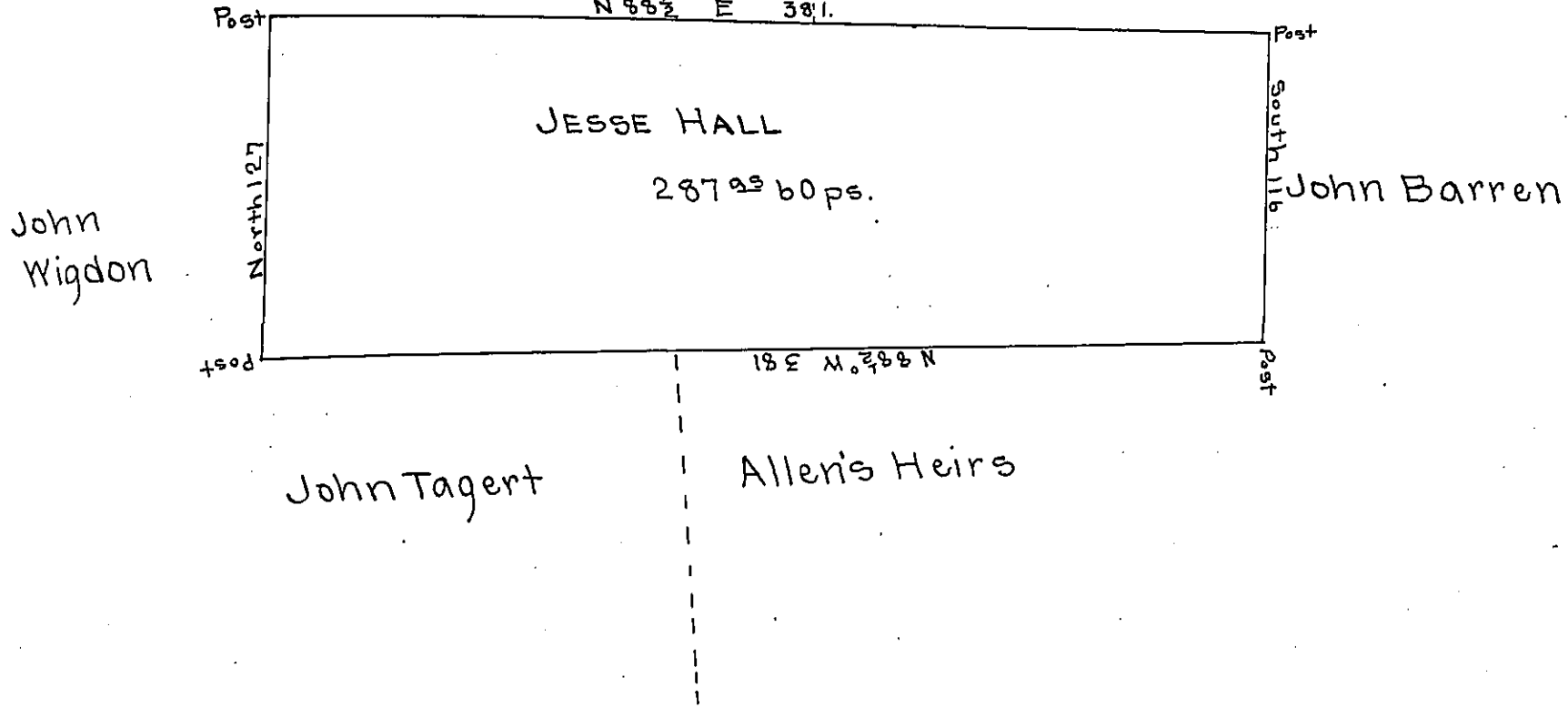


C. Widle

Jesse Hall



Draft of a tract of land Situated in Clay—Surveyed Dec. 26th 1861. in pursuance of the actual Settlement and improvement of Jhonithan Hockenberry Containing 287^{ac} 60 ps. & the usual allowance Six per. Cent &c. Surveyed at the instance of Jesse Hall.

W.D. McCandless
Co. Sur.

IN TESTIMONY that the above is a copy of the original remaining on file in the Department of Internal Affairs of Pennsylvania, made conformably to an Act of Assembly approved the 16th day of February, 1833, I have hereunto set my Hand and caused the Seal of said Department to be affixed at Harrisburg, this twenty-seventh day of April 1905

James D. Brown
Secretary of Internal Affairs.